

SILCHAR ←

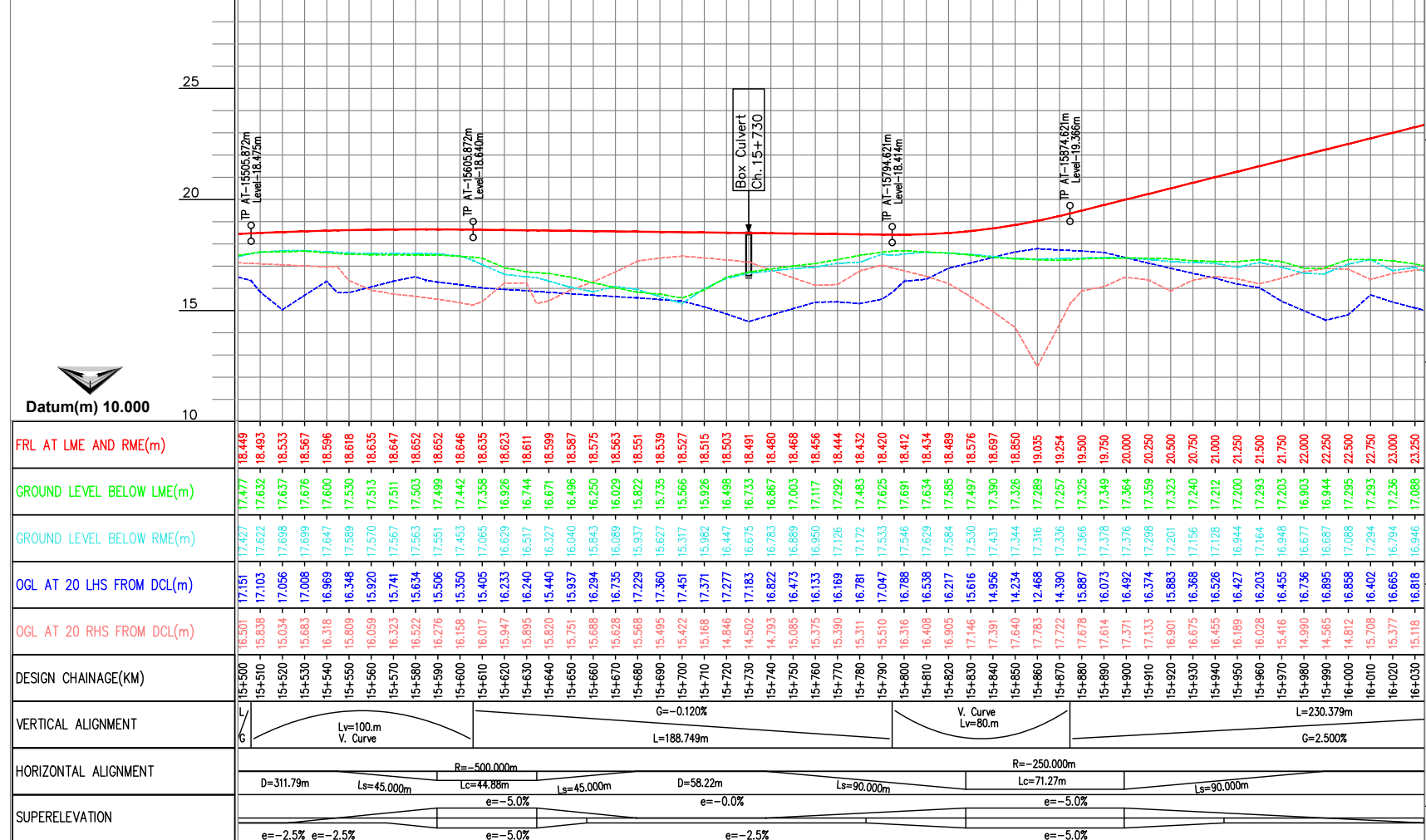
→ KARIMGANJ/AGARTALA



DESCRIPTION	EXISTING	PROPOSED
STRUCTURE TYPE		Box Culvert
IMPROVEMENT TYPE		New construction
CHAINAGE		15+730
SPAN ARRANGEMENT (m)		1 x 2.0 x 2.0
SKEW (°)		---

HIP-16/2 At Ch: 15612.1m	
E=462320.236	N=2748356.014
R (m)	500
Ls (m)	45
Lc (m)	44.879
Ts (m)	67.574
Es (m)	2.196
Δ (deg)	5.1427
Δs (deg)	2.5783
Δ (deg)	10.2993
S (m)	0.169
e (%)	5
Design Speed(V):100 Km/Hr.	

HIP-16/3 At Ch: 15883.4m	
E=462154.345	N=2748549.355
R (m)	250
Ls (m)	90
Lc (m)	71.274
Ts (m)	122.938
Es (m)	15.077
Δ (deg)	16.3349
Δs (deg)	8.1674
Δ (deg)	24.5023
S (m)	0.35
e (%)	5
Design Speed(V):100 Km/Hr.	



REV	DATE	DESCRIPTION OF REVISIONS	BY

LEGEND:

PLAN

- PROPOSED ROAD CENTER LINE
- PROPOSED MEDIAN
- PROPOSED ROAD EDGE
- PROPOSED SHOULDER
- PROPOSED EARTHAN SHOULDER
- PROPOSED SERVICE ROAD
- PROPOSED DRAIN
- PROPOSED ROW
- EARTH WORK

PROFILE

- FRL LME
- FRL RME
- OGL LME
- OGL RME
- OGL 20m OFFSET (LEFT)
- OGL 20m OFFSET (RIGHT)

CLIENT:

National Highways Infrastructure Development Corporation limited

CONSULTANT:

FEEDBACK INFRA | Feedback Infra Private Limited
10th Floor, Building 10C
DLF Cyber City, Phase-II,
Gurgaon 122 002

Making Infrastructure + appear

Drawn by: K.A

Designed by: S.B

Checked by: S.S

Approved By: C.P

Scale: A2 2000, A3 3000, V 200

Date: Nov - 2022

STATUS: DETAILED PROJECT REPORT

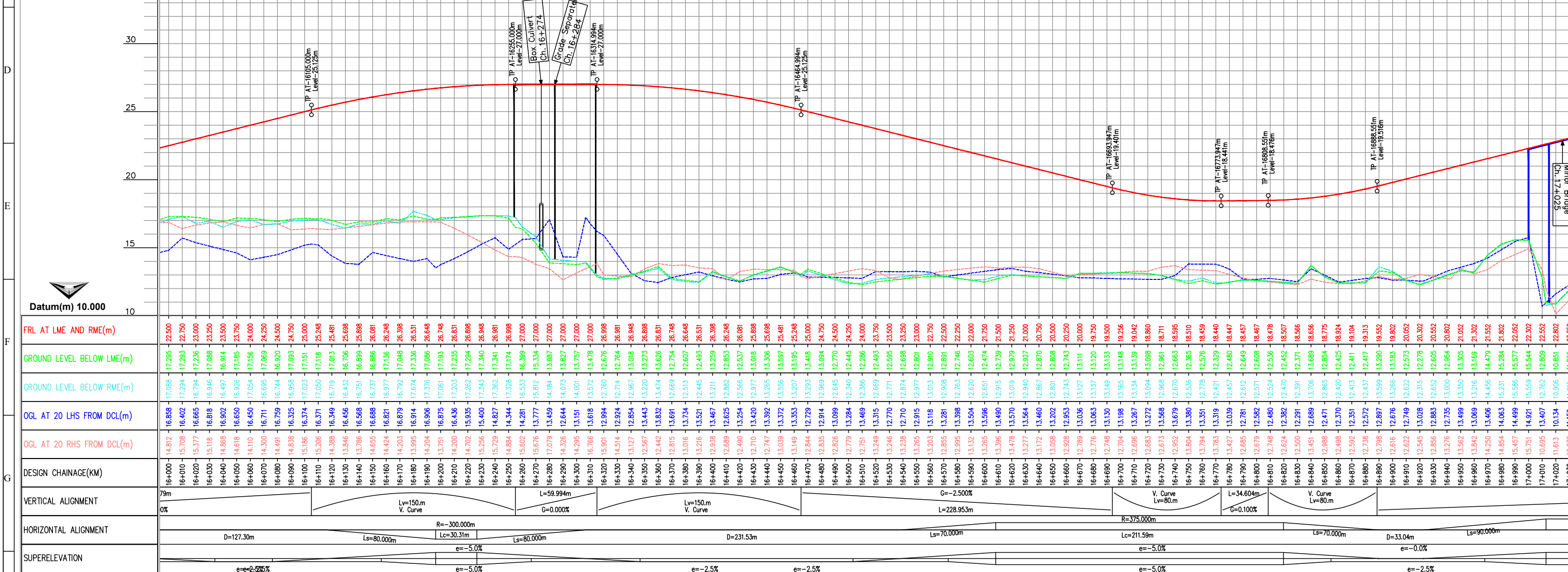
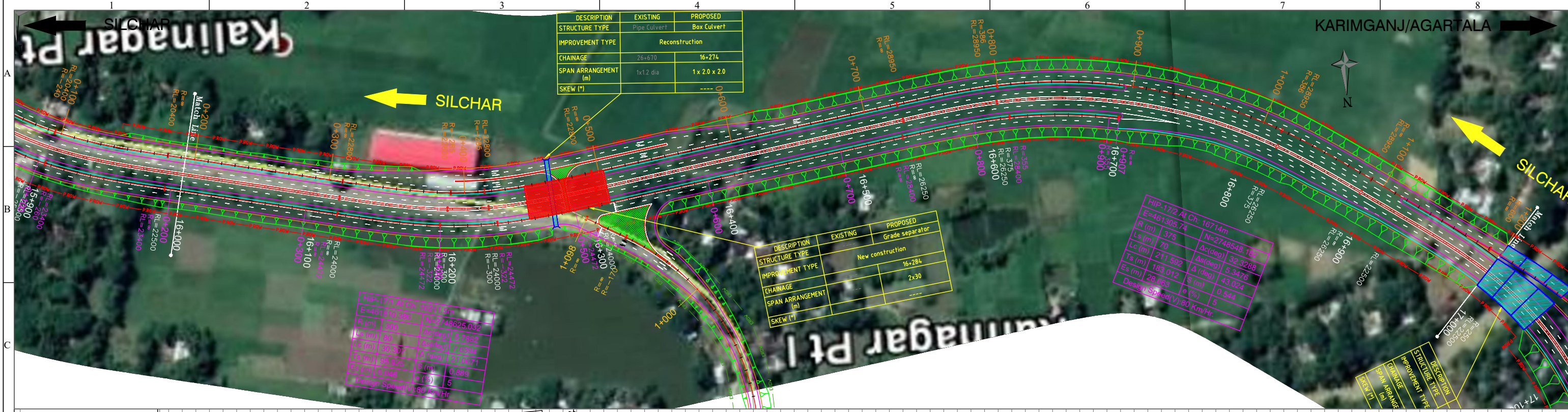
PROJECT: Feasibility study, preparation of Detailed project report and providing pre construction services in respect of up-gradation to two lane with paved shoulder NH configuration of corridors under BHARATMALA project, NH connectivity to BRT places of the country and ADB funded projects in the state of Assam & Tripura.

TITLE: PLAN AND PROFILE
From Ch: 15+500 To Ch: 16+000

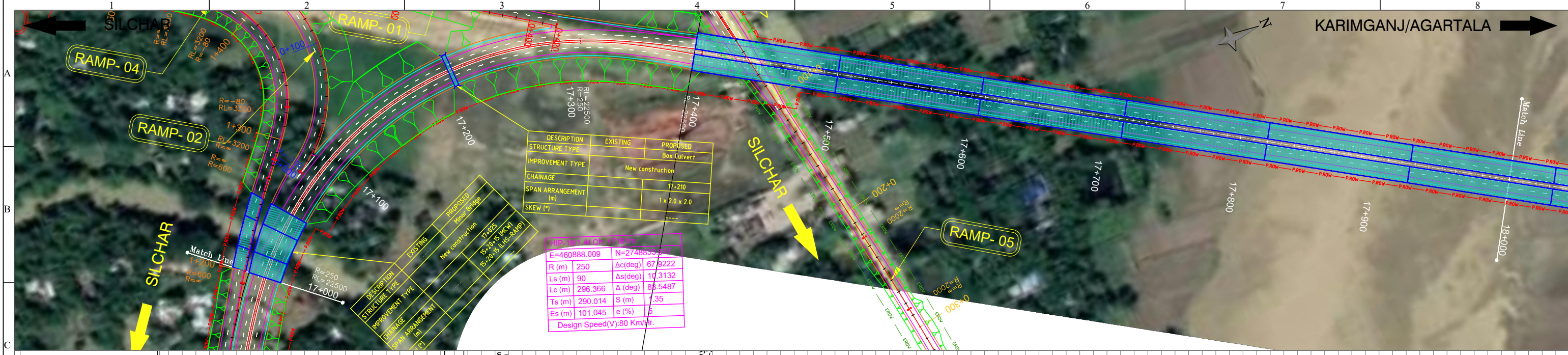
DRG NO: FIPL/HW/BHARATMALA/AT/SA/P&P/16A

REV: 0

SHEET: 0



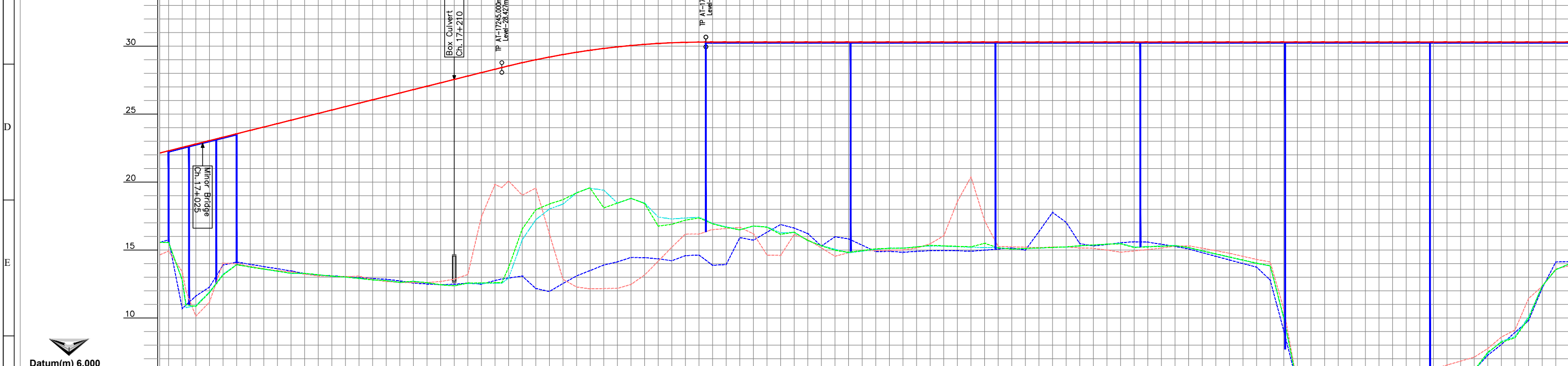
LEGEND: PLAN PROPOSED ROAD CENTER LINE PROPOSED MEDIAN PROPOSED ROAD EDGE PROPOSED SHOULDER PROPOSED EARTH SHOULDER PROPOSED SERVICE ROAD PROPOSED DRAIN PROPOSED ROW PROFILE FRL LME FRL RME OGL LME OGL RME OGL 20m OFFSET (LEFT) OGL 20m OFFSET (RIGHT)		CLIENT: National Highways Infrastructure Development Corporation Limited	CONSULTANT: Feedback Infra Private Limited 10th Floor, Building 10C DLF Cyber City, Phase-II, Gurgaon 122 002	Drawn by: K.A Designed by: S.B Checked by: S.S Approved By: C.P	STATUS: DETAILED PROJECT REPORT PROJECT: Feasibility study, preparation of Detailed project report and providing pre construction services in respect of up-gradation to two lane with paved shoulder NH configuration of corridors under BHARATMALA project, NH connectivity to BRT places of the country and ADB funded projects in the state of Assam & Tripura.	TITLE: PLAN AND PROFILE From Ch: 16+000 To Ch: 17+000	DRG NO.: FIPL/HW/BHARATMALA/AT/SA/P&P/17 REV.: 0 SHEET:
---	--	--	--	--	--	--	--



DESCRIPTION	EXISTING	PROPOSED
STRUCTURE TYPE		Box Culvert
IMPROVEMENT TYPE		New construction
CHAINAGE		17+210
SPAN ARRANGEMENT (m)		1 x 2.0 x 2.0
SKEW (°)		

E=460888.009	N=2748655.847
R (m) 250	Δc(deg) 67.9222
Ls (m) 90	Δs(deg) 10.3132
Lc (m) 296.366	Δ (deg) 88.5487
Ts (m) 290.014	S (m) 1.35
Es (m) 101.045	e (%) 5
Design Speed(V):80 Km/hr.	

DESCRIPTION	EXISTING	PROPOSED
STRUCTURE TYPE		Minor Bridge
IMPROVEMENT TYPE		New construction
CHAINAGE		17+225
SPAN ARRANGEMENT (m)		55+70.15 (P&P) 55+70.15 (L&S-R&P)



Station	FRL AT LME AND RME(m)	GROUND LEVEL BELOW LME(m)	GROUND LEVEL BELOW RME(m)	OGL AT 20 LHS FROM DCL(m)	OGL AT 20 RHS FROM DCL(m)
17+000	22.302	15.544	15.559	14.921	15.751
17+010	22.552	12.809	12.762	13.407	10.695
17+020	22.802	10.851	10.906	11.613	10.101
17+030	23.052	11.866	11.915	11.159	12.272
17+040	23.302	13.160	13.213	14.041	13.897
17+050	23.552	13.913	13.928	13.987	14.116
17+060	23.802	13.747	13.750	13.802	13.947
17+070	24.052	13.595	13.593	13.615	13.785
17+080	24.302	13.448	13.438	13.478	13.622
17+090	24.552	13.297	13.284	13.402	13.466
17+100	24.802	13.288	13.280	13.222	13.263
17+110	25.052	13.181	13.181	13.093	13.162
17+120	25.302	13.081	13.072	13.063	13.072
17+130	25.552	13.016	13.010	13.043	13.010
17+140	25.802	12.917	12.901	13.079	12.901
17+150	26.052	12.803	12.805	12.834	12.805
17+160	26.302	12.746	12.760	12.690	12.646
17+170	26.552	12.628	12.613	12.618	12.725
17+180	26.802	12.594	12.592	12.608	12.502
17+190	27.052	12.564	12.542	12.685	12.438
17+200	27.302	12.444	12.444	12.853	12.468
17+210	27.552	12.361	12.360	12.853	12.468
17+220	27.802	12.278	12.252	13.200	12.542
17+230	28.052	12.181	12.181	17.449	12.545
17+240	28.302	12.074	12.074	19.824	12.550
17+250	28.552	11.959	11.940	20.080	12.940
17+260	28.802	11.836	11.836	19.038	15.751
17+270	29.052	11.707	11.707	19.562	17.233
17+280	29.302	11.574	11.574	16.196	18.017
17+290	29.552	11.438	11.438	12.844	18.381
17+300	29.802	11.300	11.300	12.279	19.205
17+310	29.700	11.164	11.164	12.144	19.544
17+320	29.683	11.028	11.028	12.170	19.406
17+330	29.666	10.892	10.892	12.177	18.447
17+340	29.650	10.756	10.756	16.175	17.416
17+350	29.633	10.620	10.620	16.500	16.928
17+360	29.617	10.484	10.484	16.582	16.707
17+370	29.600	10.348	10.348	16.197	16.755
17+380	29.583	10.212	10.212	16.665	16.468
17+390	29.567	10.076	10.076	16.772	16.172
17+400	29.550	9.940	9.940	16.830	16.703
17+410	29.533	9.804	9.804	14.601	16.149
17+420	29.517	9.668	9.668	14.176	16.762
17+430	29.500	9.532	9.532	15.208	16.893
17+440	29.483	9.396	9.396	16.173	17.198
17+450	29.467	9.260	9.260	16.175	17.363
17+460	29.450	9.124	9.124	16.500	16.941
17+470	29.433	8.988	8.988	16.582	16.707
17+480	29.417	8.852	8.852	16.197	16.755
17+490	29.400	8.716	8.716	16.665	16.468
17+500	29.383	8.580	8.580	16.772	16.172
17+510	29.367	8.444	8.444	14.630	16.703
17+520	29.350	8.308	8.308	14.964	15.098
17+530	29.333	8.172	8.172	14.972	15.137
17+540	29.317	8.036	8.036	15.011	15.145
17+550	29.300	7.900	7.900	15.138	15.234
17+560	29.283	7.764	7.764	15.461	15.301
17+570	29.267	7.628	7.628	16.050	15.282
17+580	29.250	7.492	7.492	18.572	15.248
17+590	29.233	7.356	7.356	14.801	14.792
17+600	29.217	7.220	7.220	14.957	14.921
17+610	29.200	7.084	7.084	14.964	15.050
17+620	29.183	6.948	6.948	14.972	15.137
17+630	29.167	6.812	6.812	15.011	15.145
17+640	29.150	6.676	6.676	15.138	15.234
17+650	29.133	6.540	6.540	15.461	15.301
17+660	29.117	6.404	6.404	16.050	15.282
17+670	29.100	6.268	6.268	18.572	15.248
17+680	29.083	6.132	6.132	15.176	15.145
17+690	29.067	6.000	6.000	15.226	15.224
17+700	29.050	5.864	5.864	15.154	15.297
17+710	29.033	5.728	5.728	15.003	15.435
17+720	29.017	5.592	5.592	14.935	15.495
17+730	29.000	5.456	5.456	14.840	15.495
17+740	28.983	5.320	5.320	14.935	15.215
17+750	28.967	5.184	5.184	15.037	15.257
17+760	28.950	5.048	5.048	15.140	15.298
17+770	28.933	4.912	4.912	15.286	15.340
17+780	28.917	4.776	4.776	15.140	14.929
17+790	28.900	4.640	4.640	14.951	14.700
17+800	28.883	4.504	4.504	14.763	14.471
17+810	28.867	4.368	4.368	14.538	14.242
17+820	28.850	4.232	4.232	14.309	14.014
17+830	28.833	4.096	4.096	14.122	13.826
17+840	28.817	3.960	3.960	10.669	9.961
17+850	28.800	3.824	3.824	5.097	5.098
17+860	28.783	3.688	3.688	5.115	5.115
17+870	28.767	3.552	3.552	5.133	5.133
17+880	28.750	3.416	3.416	5.152	5.151
17+890	28.733	3.280	3.280	5.188	5.186
17+900	28.717	3.144	3.144	5.207	5.204
17+910	28.700	3.008	3.008	5.387	5.222
17+920	28.683	2.872	2.872	5.675	5.240
17+930	28.667	2.736	2.736	5.963	5.258
17+940	28.650	2.600	2.600	6.251	5.275
17+950	28.633	2.464	2.464	6.539	5.293
17+960	28.617	2.328	2.328	6.827	5.314
17+970	28.600	2.192	2.192	7.114	6.121
17+980	28.583	2.056	2.056	7.398	7.477
17+990	28.567	1.920	1.920	8.596	8.283
18+000	28.550	1.784	1.784	9.116	8.628
18+010	28.533	1.648	1.648	11.432	10.086
18+020	28.517	1.512	1.512	12.335	12.346
18+030	28.500	1.376	1.376	13.605	13.552
18+040	28.483	1.240	1.240	13.842	13.971

REV DATE DESCRIPTION OF REVISIONS BY

LEGEND:

PLAN

- PROPOSED ROAD CENTER LINE
- PROPOSED MEDIAN
- PROPOSED ROAD EDGE
- PROPOSED SHOULDER
- PROPOSED EARTH SHOULDER
- PROPOSED SERVICE ROAD
- PROPOSED DRAIN
- PROPOSED ROW
- PROPOSED ROAD EARTH WORK

PROFILE

- FRL LME
- FRL RME
- OGL LME
- OGL RME
- OGL 20m OFFSET (LEFT)
- OGL 20m OFFSET (RIGHT)

CLIENT:

National Highways Infrastructure Development Corporation limited

CONSULTANT:

FEEDBACK INFRA
Feedback Infra Private Limited
10th Floor, Building 10C
DLF Cyber City, Phase-II,
Gurgaon 122 002

Drawn by: K.A

Designed by: S.B

Checked by: S.S

Approved By: C.P

Scale: A2 3000, A3 3000, V 200

Date: Nov - 2022

STATUS: DETAILED PROJECT REPORT

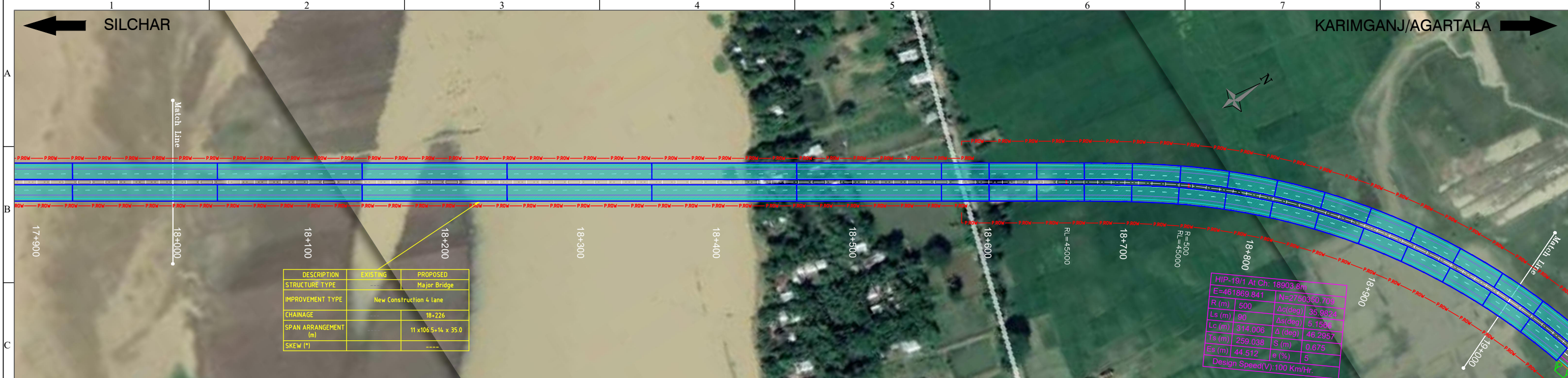
PROJECT: Feasibility study, preparation of Detailed project report and providing pre construction services in respect of up-gradation to two lane with paved shoulder NH configuration of corridors under BHARATMALA project, NH connectivity to BRT places of the country and ADB funded projects in the state of Assam & Tripura.

TITLE: PLAN AND PROFILE
From Ch: 17+000 To Ch: 18+000

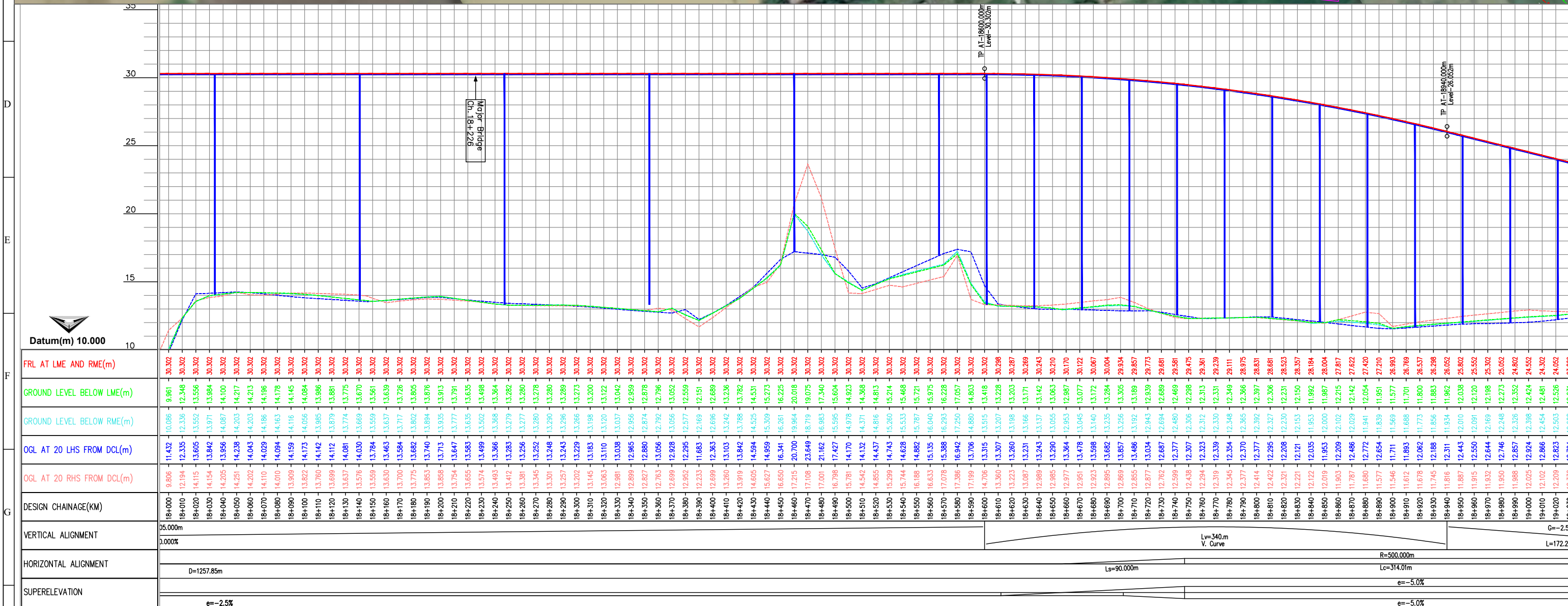
DRG NO: FIPL/HW/BHARATMALA/AT/SA/P&P/18

REV: 0

SHEET: 0



HIP-19/1 At Ch: 18903.8m	E=461869.841	N=2760360.709
R (m)	500	Δc(deg) 35.9824
Ls (m)	90	Δs(deg) 5.1586
Lc (m)	314.006	Δ(deg) 46.2957
Ts (m)	259.038	S (m) 0.675
Es (m)	44.512	e (%) 5
Design Speed(V): 100 Km/Hr.		

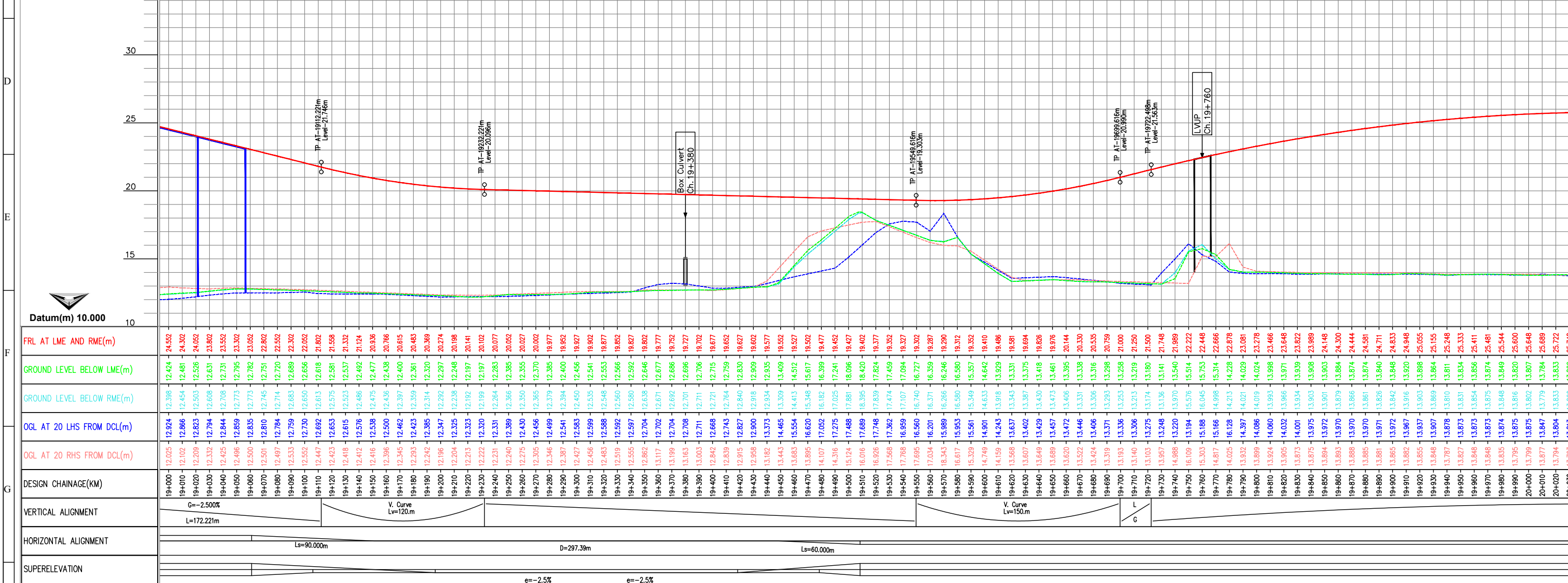


LEGEND: PLAN - - - - - PROPOSED ROAD CENTER LINE - - - - - PROPOSED MEDIAN - - - - - PROPOSED ROAD EDGE - - - - - PROPOSED SHOULDER - - - - - PROPOSED EARTH SHOULDER - - - - - PROPOSED SERVICE ROAD - - - - - PROPOSED DRAIN - - - - - PROPOSED ROW - - - - - EARTH WORK PROFILE - - - - - FRL LME - - - - - FRL RME - - - - - OGL LME - - - - - OGL RME - - - - - OGL 20m OFFSET (LEFT) - - - - - OGL 20m OFFSET (RIGHT)		CLIENT: National Highways Infrastructure Development Corporation limited	CONSULTANT: FEEDBACK INFRA Making Infrastructure +appen Feedback Infra Private Limited 10th Floor, Building 10C DLF Cyber City, Phase-II, Gurgaon 122 002	Drawn by: K.A Designed by: S.B Checked by: S.S Approved By: C.P Scale: A2 3000, A3 3000, V 200 Date: Nov - 2022	STATUS: DETAILED PROJECT REPORT PROJECT: Feasibility study, preparation of Detailed project report and providing pre construction services in respect of up-gradation to two lane with paved shoulder NH configuration of corridors under BHARATMALA project, NH connectivity to BRT places of the country and ADB funded projects in the state of Assam & Tripura. TITLE: PLAN AND PROFILE From Ch: 18+000 To Ch: 19+000	DRG NO.: FIPL/HW/BHARATMALA/AT/SA/P&P/19 REV. 0 SHEET:
---	--	--	--	--	--	--



DESCRIPTION	EXISTING	PROPOSED
STRUCTURE TYPE		Box Culvert
IMPROVEMENT TYPE		New construction
CHAINAGE		19+380
SPAN ARRANGEMENT (m)		1 x 2.0 x 2.0
SKEW (°)		----

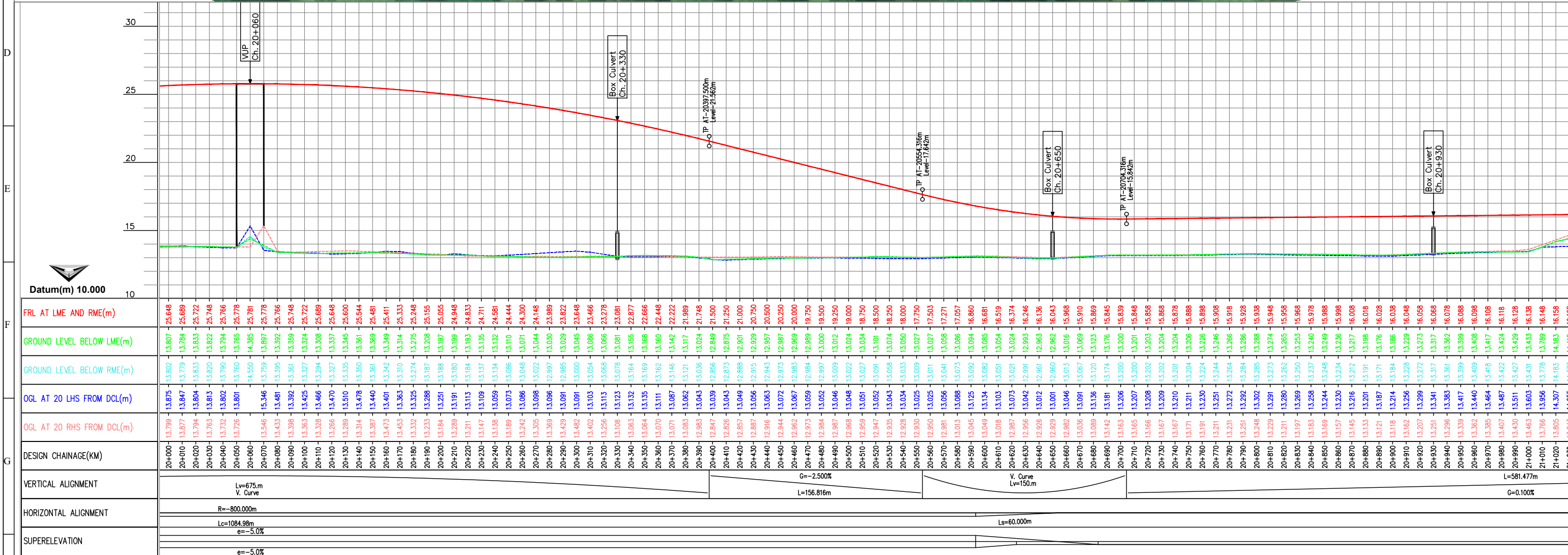
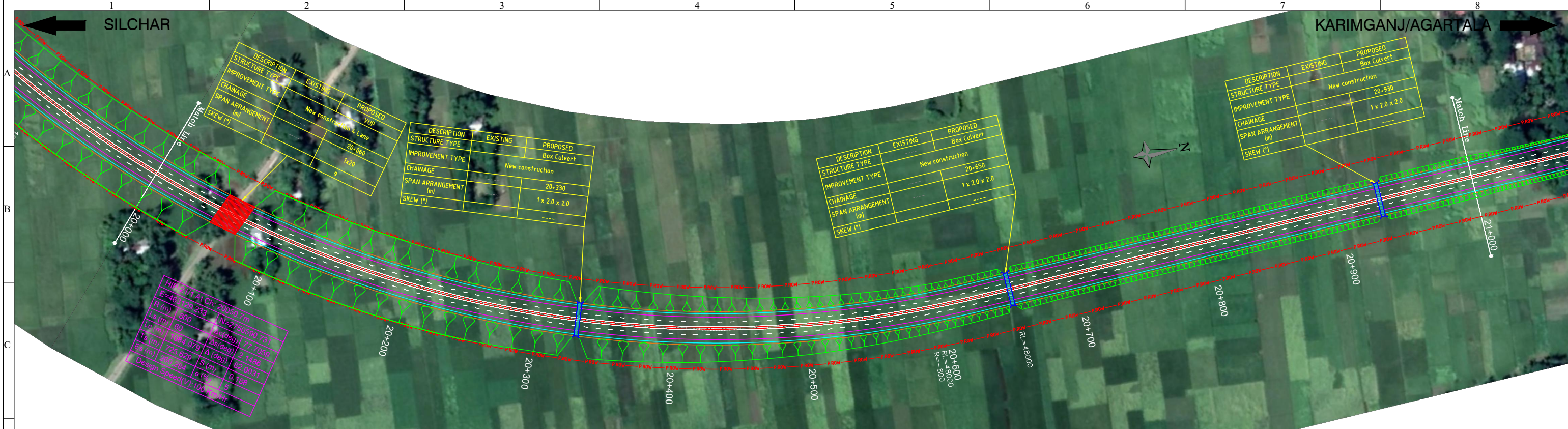
DESCRIPTION	EXISTING	PROPOSED
STRUCTURE TYPE		LVUP
IMPROVEMENT TYPE		New construction 4 Lane
CHAINAGE		19+760
SPAN ARRANGEMENT (m)		1x12x4
SKEW (°)		36



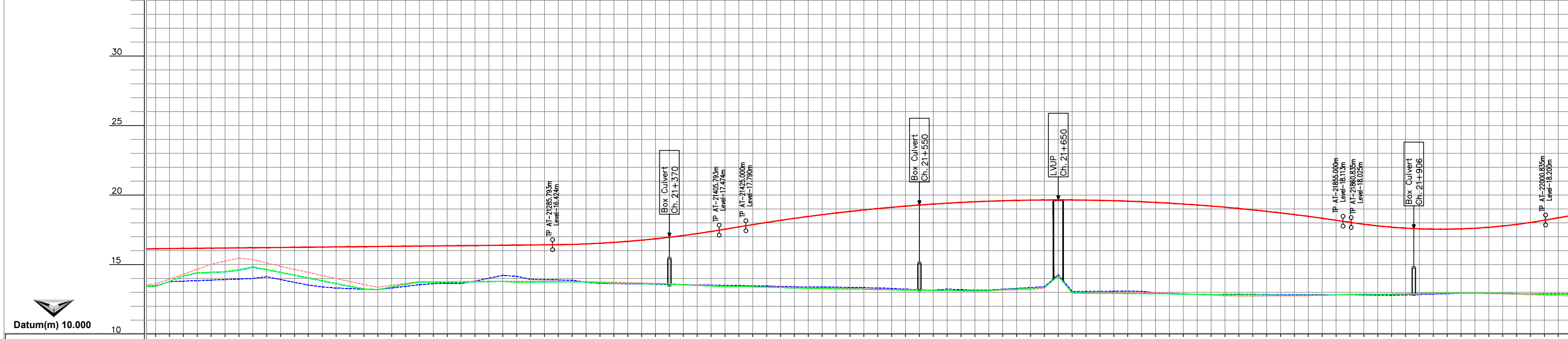
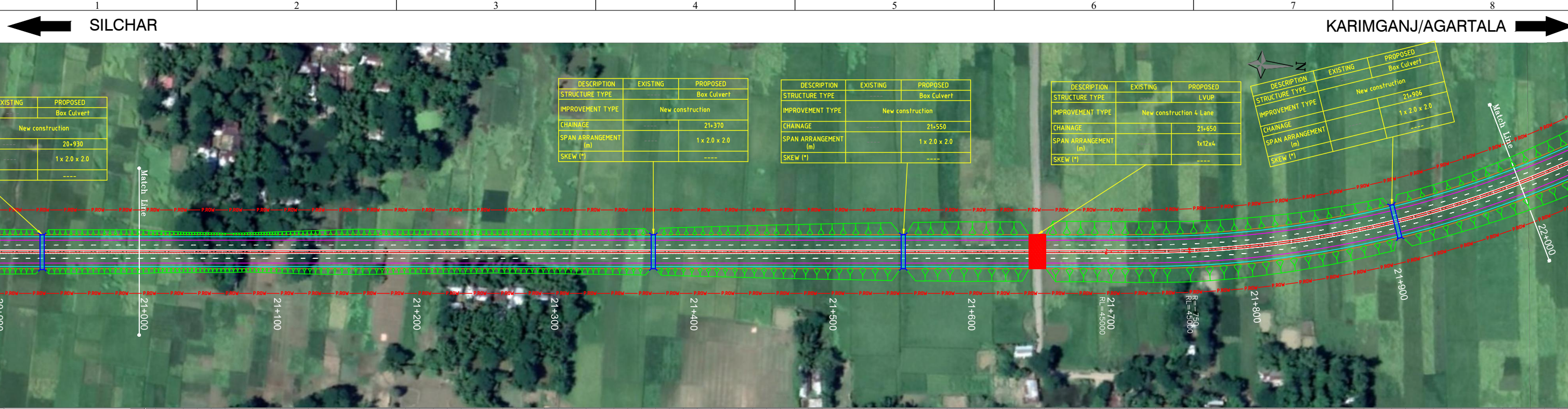
REV	DATE	DESCRIPTION OF REVISIONS	BY

PLAN	PROFILE
<ul style="list-style-type: none"> PROPOSED ROAD CENTER LINE PROPOSED MEDIAN PROPOSED ROAD EDGE PROPOSED SHOULDER PROPOSED EARTHAN SHOULDER PROPOSED SERVICE ROAD PROPOSED DRAIN PROPOSED ROW 	<ul style="list-style-type: none"> FRL LME FRL RME OGL LME OGL RME OGL 20m OFFSET (LEFT) OGL 20m OFFSET (RIGHT)

CLIENT:	 National Highways Infrastructure Development Corporation limited	CONSULTANT:	 Feedback Infra Private Limited 10th Floor, Building 10C DLF Cyber City, Phase-II, Gurgaon 122 002	Drawn by: K.A Designed by: S.B Checked by: S.S Approved By: C.P	STATUS: DETAILED PROJECT REPORT PROJECT: Feasibility study, preparation of Detailed project report and providing pre construction services in respect of up-gradation to two lane with paved shoulder NH configuration of corridors under BHARATMALA project, NH connectivity to BRT places of the country and ADB funded projects in the state of Assam & Tripura. TITLE: ADB PLAN AND PROFILE From Ch: 19+000 To Ch: 20+000
---------	--	-------------	--	--	--



LEGEND: PLAN PROPOSED ROAD CENTER LINE PROPOSED MEDIAN PROPOSED ROAD EDGE PROPOSED SHOULDER PROPOSED EARTHAN SHOULDER PROPOSED SERVICE ROAD PROPOSED DRAIN PROPOSED ROW EARTH WORK PROFILE FRL LME FRL RME OGL LME OGL RME OGL 20m OFFSET (LEFT) OGL 20m OFFSET (RIGHT)		CLIENT: National Highways Infrastructure Development Corporation Limited	CONSULTANT: FEEDBACK INFRA Making Infrastructure +appen Feedback Infra Private Limited 10th Floor, Building 10C DLF Cyber City, Phase-II, Gurgaon 122 002	Drawn by: K.A Designed by: S.B Checked by: S.S Approved By: C.P Scale: A2 3000, A3 3000, V 200 Date: Nov - 2022	STATUS: DETAILED PROJECT REPORT PROJECT: Feasibility study, preparation of Detailed project report and providing pre configuration services in respect of up-gradation to two lane with paved shoulder NH configuration of corridors under BHARTMALA project, NH connectivity to BRT places of the country and ADB funded projects in the state of Assam & Tripura. TITLE: PLAN AND PROFILE From Ch: 20+000 To Ch: 21+000 DRG NO.: FIPL/HW/BHARATMALA/AT/SA/P&P/21 REV.: 0 SHEET:
---	--	---	---	--	--



Station	FRL AT LME AND RME(m)	GROUND LEVEL BELOW LME(m)	GROUND LEVEL BELOW RME(m)	OGL AT 20 LHS FROM DCL(m)	OGL AT 20 RHS FROM DCL(m)
21+000	16.138	13.433	13.431	13.603	13.463
21+010	16.148	13.788	13.778	13.956	13.768
21+020	16.158	14.183	14.183	14.307	14.183
21+030	16.168	14.418	14.377	14.655	14.377
21+040	16.178	14.457	14.445	15.028	14.445
21+050	16.188	14.465	14.453	15.248	14.465
21+060	16.198	14.635	14.570	15.457	14.570
21+070	16.208	14.844	14.780	15.355	14.780
21+080	16.218	14.654	14.615	15.115	14.615
21+090	16.228	14.452	14.414	14.875	14.414
21+100	16.238	14.251	14.212	14.651	14.212
21+110	16.248	14.049	14.011	14.434	14.011
21+120	16.258	13.848	13.809	14.217	13.809
21+130	16.268	13.646	13.608	13.999	13.608
21+140	16.278	13.444	13.406	13.782	13.406
21+150	16.288	13.242	13.202	13.564	13.242
21+160	16.298	13.039	13.000	13.346	13.039
21+170	16.308	12.836	12.797	13.128	12.836
21+180	16.318	12.633	12.594	12.910	12.633
21+190	16.328	12.430	12.391	12.692	12.430
21+200	16.338	12.227	12.192	12.474	12.227
21+210	16.348	12.024	12.000	12.256	12.024
21+220	16.358	11.821	11.800	12.038	11.821
21+230	16.368	11.618	11.600	11.820	11.618
21+240	16.378	11.415	11.400	11.602	11.415
21+250	16.388	11.212	11.200	11.384	11.212
21+260	16.398	11.009	11.000	11.166	11.009
21+270	16.408	10.806	10.800	10.948	10.806
21+280	16.418	10.603	10.600	10.730	10.603
21+290	16.429	10.400	10.400	10.512	10.400
21+300	16.451	10.197	10.197	10.294	10.197
21+310	16.486	9.994	9.994	10.076	9.994
21+320	16.533	9.791	9.791	9.858	9.791
21+330	16.594	9.588	9.588	9.640	9.588
21+340	16.668	9.385	9.385	9.422	9.385
21+350	16.754	9.182	9.182	9.204	9.182
21+360	16.853	8.979	8.979	8.986	8.979
21+370	16.966	8.776	8.776	8.768	8.776
21+380	17.091	8.573	8.573	8.550	8.573
21+390	17.229	8.370	8.370	8.332	8.370
21+400	17.380	8.167	8.167	8.114	8.167
21+410	17.543	7.964	7.964	7.896	7.964
21+420	17.708	7.761	7.761	7.678	7.761
21+430	17.872	7.558	7.558	7.460	7.558
21+440	18.030	7.355	7.355	7.242	7.355
21+450	18.180	7.152	7.152	7.024	7.152
21+460	18.323	6.949	6.949	6.806	6.949
21+470	18.459	6.746	6.746	6.588	6.746
21+480	18.587	6.543	6.543	6.370	6.543
21+490	18.708	6.340	6.340	6.152	6.340
21+500	18.822	6.137	6.137	5.934	6.137
21+510	18.928	5.934	5.934	5.716	5.934
21+520	19.027	5.731	5.731	5.498	5.731
21+530	19.119	5.528	5.528	5.280	5.528
21+540	19.204	5.325	5.325	5.062	5.325
21+550	19.281	5.122	5.122	4.844	5.122
21+560	19.350	4.919	4.919	4.626	4.919
21+570	19.413	4.716	4.716	4.408	4.716
21+580	19.468	4.513	4.513	4.190	4.513
21+590	19.516	4.310	4.310	3.972	4.310
21+600	19.556	4.107	4.107	3.754	4.107
21+610	19.589	3.904	3.904	3.536	3.904
21+620	19.615	3.701	3.701	3.318	3.701
21+630	19.634	3.498	3.498	3.100	3.498
21+640	19.645	3.295	3.295	2.882	3.295
21+650	19.649	3.092	3.092	2.664	3.092
21+660	19.645	2.889	2.889	2.446	2.889
21+670	19.634	2.686	2.686	2.228	2.686
21+680	19.616	2.483	2.483	2.010	2.483
21+690	19.591	2.280	2.280	1.792	2.280
21+700	19.558	2.077	2.077	1.574	2.077
21+710	19.518	1.874	1.874	1.356	1.874
21+720	19.470	1.671	1.671	1.138	1.671
21+730	19.416	1.468	1.468	0.920	1.468
21+740	19.354	1.265	1.265	0.702	1.265
21+750	19.284	1.062	1.062	0.484	1.062
21+760	19.207	0.859	0.859	0.266	0.859
21+770	19.123	0.656	0.656	0.048	0.656
21+780	19.032	0.453	0.453	-0.170	0.453
21+790	18.933	0.250	0.250	-0.388	0.250
21+800	18.827	0.047	0.047	-0.606	0.047
21+810	18.714	-0.156	-0.156	-0.824	0.047
21+820	18.593	-0.359	-0.359	-1.042	0.047
21+830	18.465	-0.562	-0.562	-1.260	0.047
21+840	18.330	-0.765	-0.765	-1.478	0.047
21+850	18.187	-0.968	-0.968	-1.696	0.047
21+860	18.038	-1.171	-1.171	-1.914	0.047
21+870	17.889	-1.374	-1.374	-2.132	0.047
21+880	17.781	-1.577	-1.577	-2.350	0.047
21+890	17.667	-1.780	-1.780	-2.568	0.047
21+900	17.616	-1.983	-1.983	-2.786	0.047
21+910	17.569	-2.186	-2.186	-3.004	0.047
21+920	17.544	-2.389	-2.389	-3.222	0.047
21+930	17.543	-2.592	-2.592	-3.440	0.047
21+940	17.565	-2.795	-2.795	-3.658	0.047
21+950	17.611	-3.000	-3.000	-3.876	0.047
21+960	17.679	-3.205	-3.205	-4.094	0.047
21+970	17.771	-3.410	-3.410	-4.312	0.047
21+980	17.886	-3.615	-3.615	-4.530	0.047
21+990	18.024	-3.820	-3.820	-4.748	0.047
22+000	18.186	-4.025	-4.025	-4.966	0.047
22+010	18.361	-4.230	-4.230	-5.184	0.047
22+020	18.536	-4.435	-4.435	-5.402	0.047
22+030	18.711	-4.640	-4.640	-5.620	0.047

REV DATE DESCRIPTION OF REVISIONS BY

LEGEND:

PLAN

- PROPOSED ROAD CENTER LINE
- PROPOSED MEDIAN
- PROPOSED ROAD EDGE
- PROPOSED SHOULDER
- PROPOSED EARTHAN SHOULDER
- PROPOSED SERVICE ROAD
- PROPOSED DRAIN
- PROPOSED ROW

PROFILE

- FRL LME
- FRL RME
- OGL LME
- OGL RME
- OGL 20m OFFSET (LEFT)
- OGL 20m OFFSET (RIGHT)

CLIENT:

National Highways Infrastructure Development Corporation limited

CONSULTANT:

FEEDBACK INFRA
Feedback Infra Private Limited
10th Floor, Building 10C
DLF Cyber City, Phase-II,
Gurgaon 122 002

Drawn by: K.A

Designed by: S.B

Checked by: S.S

Approved By: C.P

Scale: A2 3000, A3 3000, V 200

Date: Nov - 2022

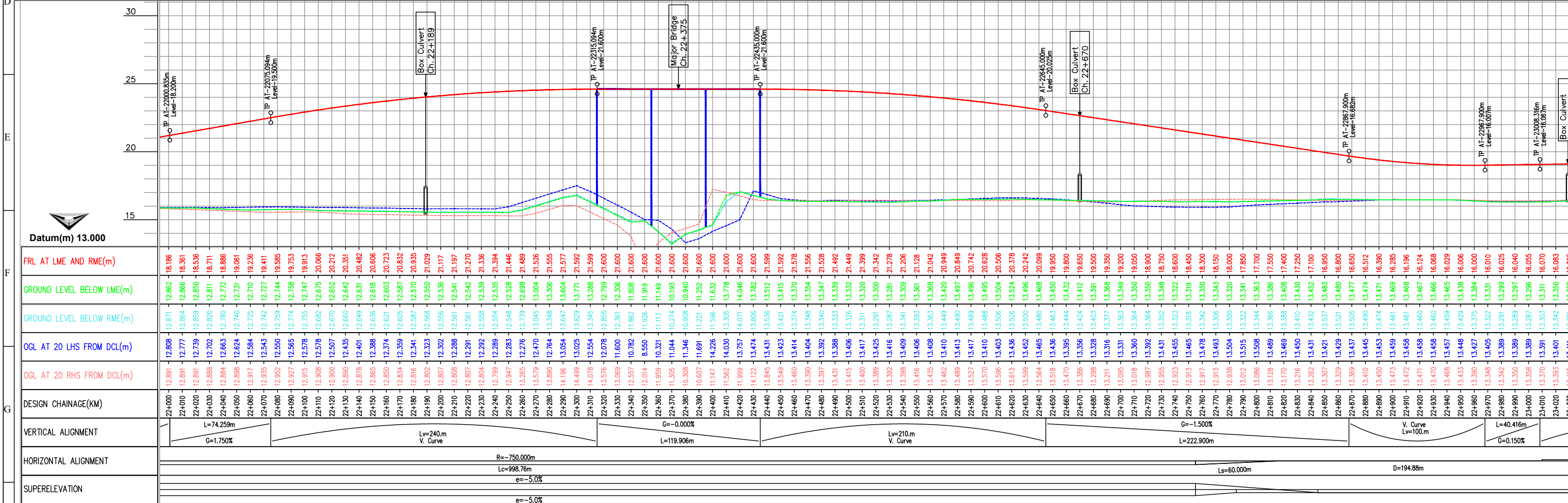
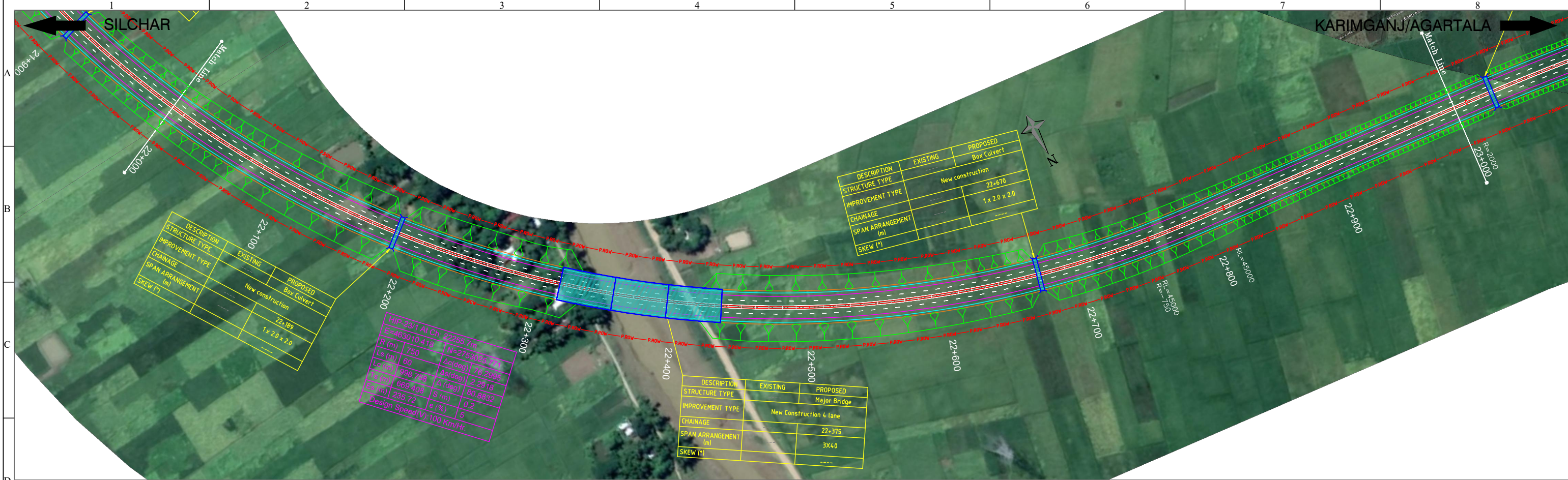
STATUS: DETAILED PROJECT REPORT

PROJECT: Feasibility study, preparation of Detailed project report and providing pre construction services in respect of up-gradation to two lane with paved shoulder NH configuration of corridors under BHARATMALA project, NH connectivity to BRT places of the country and ADB funded projects in the state of Assam & Tripura.

TITLE: ADB PLAN AND PROFILE
From Ch: 21+000 To Ch: 22+000

DRG NO: FIPL/HW/BHARATMALA/AT/SA/P&P/22

REV: 0 SHEET: 0

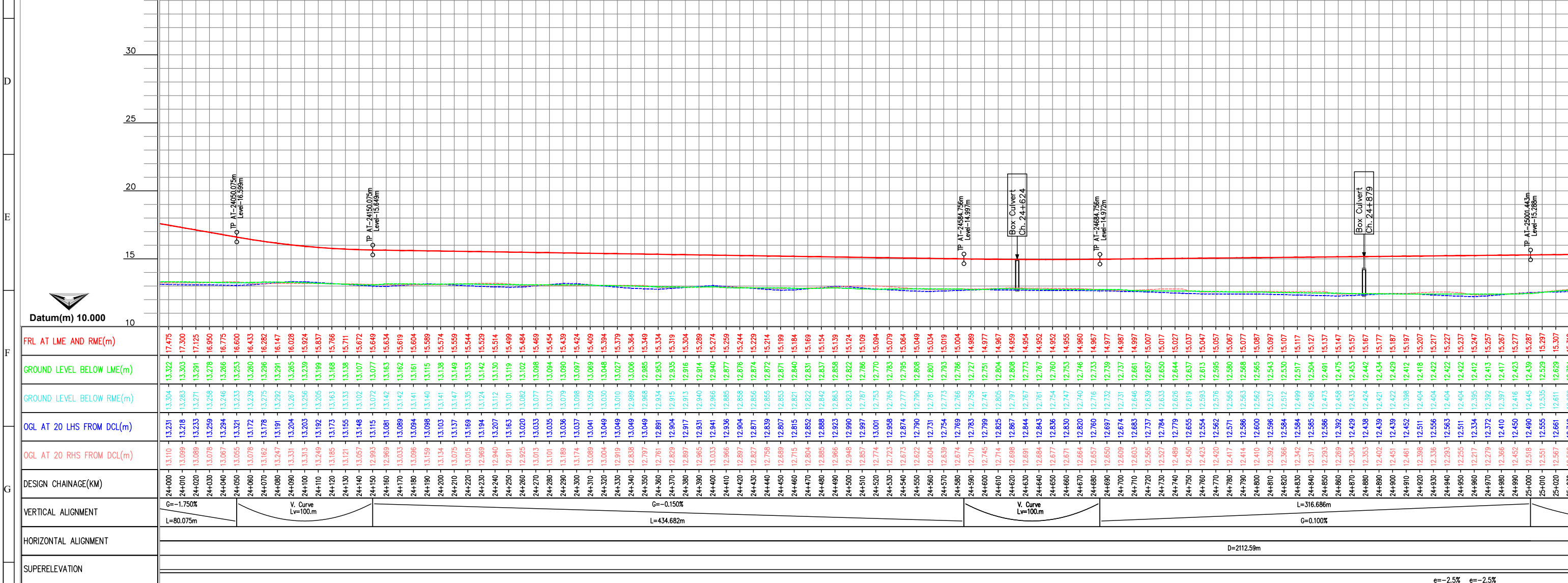


LEGEND: PLAN PROPOSED ROAD CENTER LINE PROPOSED MEDIAN PROPOSED ROAD EDGE PROPOSED SHOULDER PROPOSED EARTHAN SHOULDER PROPOSED SERVICE ROAD PROPOSED DRAIN PROPOSED ROW PROFILE FRL LME FRL RME OGL LME OGL RME OGL 20m OFFSET (LEFT) OGL 20m OFFSET (RIGHT)		CLIENT: National Highways Infrastructure Development Corporation limited	CONSULTANT: Feedback Infra Private Limited 10th Floor, Building 10C DLF Cyber City, Phase-II, Gurgaon 122 002	Drawn by: K.A Designed by: S.B Checked by: S.S Approved By: C.P	STATUS: DETAILED PROJECT REPORT PROJECT: Feasibility study, preparation of Detailed project report and providing pre construction services in respect of up-gradation to two lane with paved shoulder NH configuration of corridors under BHARTMALA project, NH connectivity to BRT places of the country and ADB funded projects in the state of Assam & Tripura. TITLE: PLAN AND PROFILE From Ch: 22+000 To Ch: 23+000	Scale: H 2000 V 3000 A2 3000 A3 3000	Date: Nov - 2022	DRG NO.: FIPL/HW/BHARATMALA/AT/SA/P&P/23 REV.: 0 SHEET: 0
---	--	--	--	--	---	---	----------------------------	--

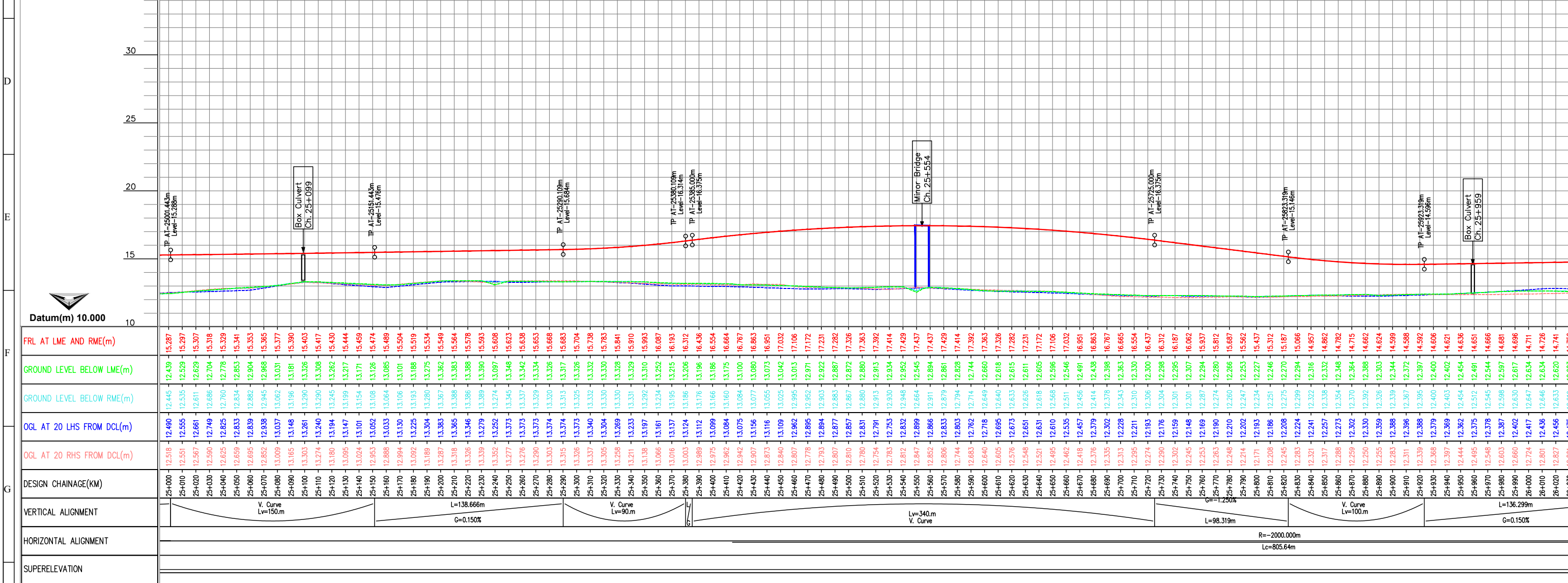
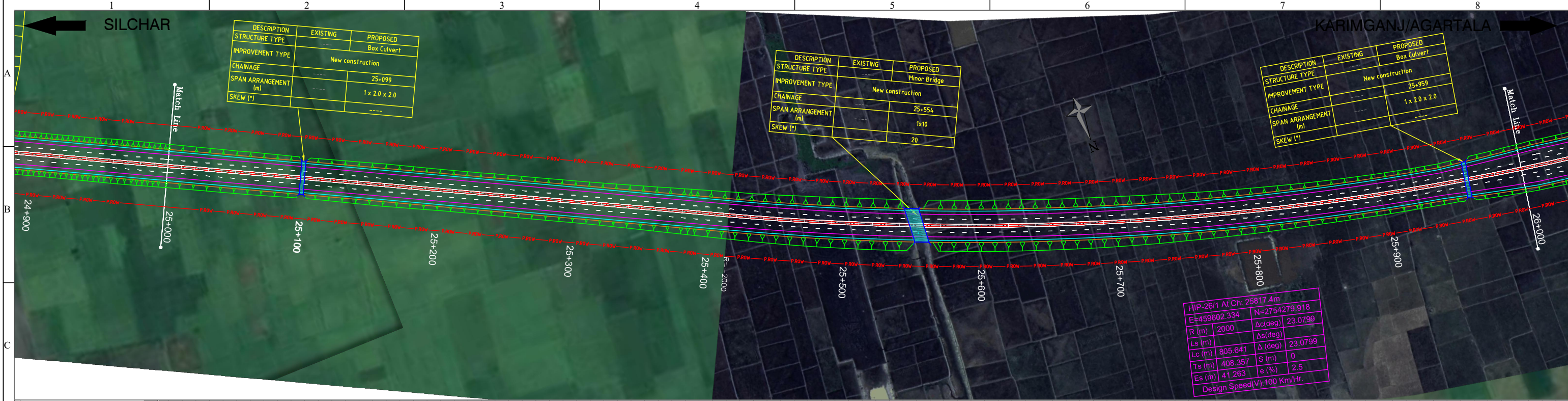


DESCRIPTION	EXISTING	PROPOSED
STRUCTURE TYPE	---	Box Culvert
IMPROVEMENT TYPE	---	New construction
CHAINAGE	---	24+624
SPAN ARRANGEMENT (m)	---	1 x 2.0 x 2.0
SKEW (°)	---	---

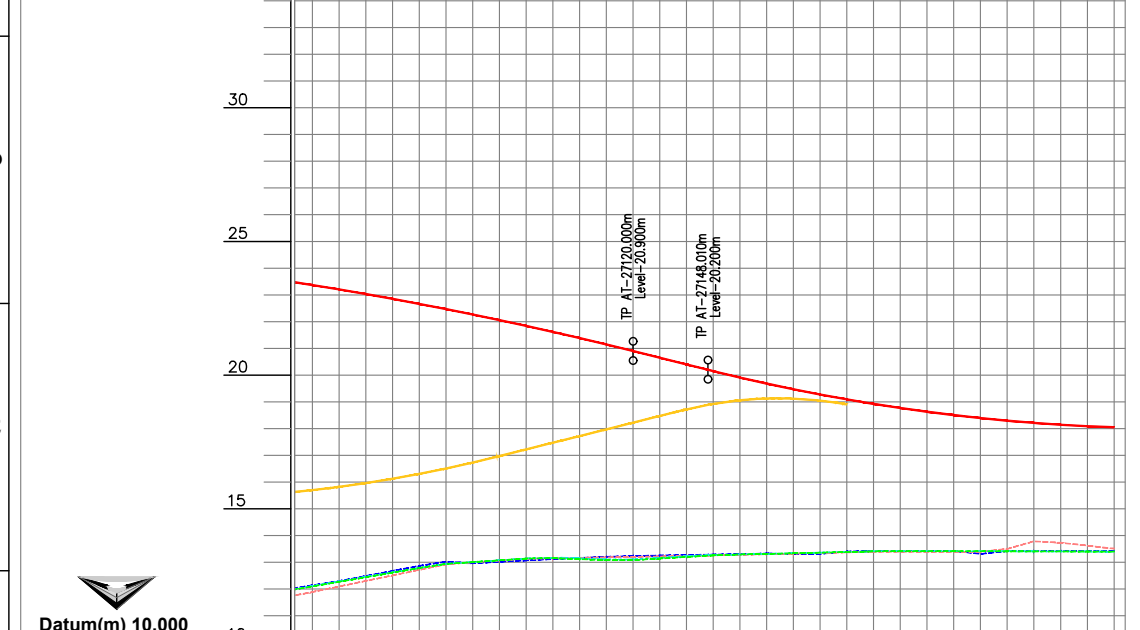
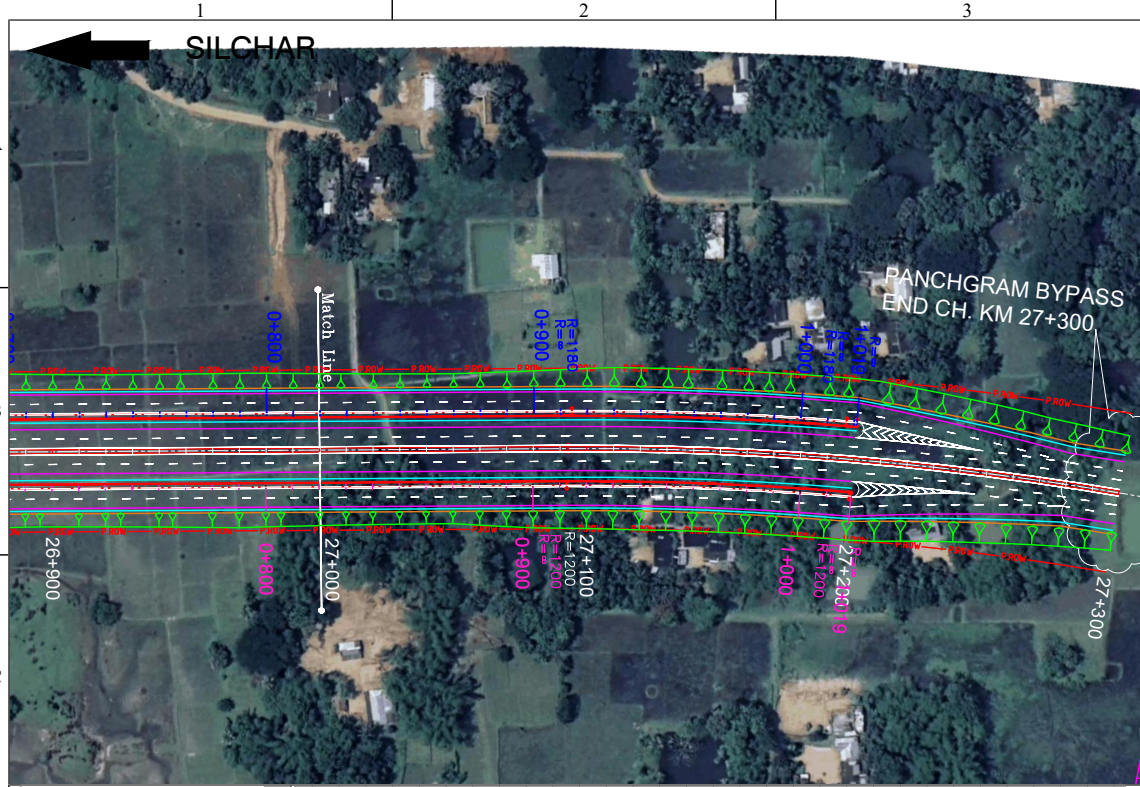
DESCRIPTION	EXISTING	PROPOSED
STRUCTURE TYPE	---	Box Culvert
IMPROVEMENT TYPE	---	New construction
CHAINAGE	---	24+879
SPAN ARRANGEMENT (m)	---	1 x 2.0 x 2.0
SKEW (°)	---	---



LEGEND: PLAN 		CLIENT: National Highways Infrastructure Development Corporation Limited		CONSULTANT: Feedback Infra Private Limited 10th Floor, Building 10C DLF Cyber City, Phase-II, Gurgaon 122 002		Drawn by: K.A Designed by: S.B Checked by: S.S Approved By: C.P		STATUS: DETAILED PROJECT REPORT																	
PROFILE 		REVISIONS: <table border="1"> <thead> <tr> <th>REV</th> <th>DATE</th> <th>DESCRIPTION OF REVISIONS</th> <th>BY</th> </tr> </thead> <tbody> <tr><td> </td><td> </td><td> </td><td> </td></tr> <tr><td> </td><td> </td><td> </td><td> </td></tr> <tr><td> </td><td> </td><td> </td><td> </td></tr> </tbody> </table>		REV	DATE	DESCRIPTION OF REVISIONS	BY													PROJECT: Feasibility study, preparation of Detailed project report and providing pre construction services in respect of up-gradation to two lane with paved shoulder NH configuration of corridors under BHARATMALA project, NH connectivity to BRT places of the country and ADB funded projects in the state of Assam & Tripura.		TITLE: PLAN AND PROFILE From Ch: 24+000 To Ch: 25+000		DRG NO.: FIPL/HW/BHARATMALA/AT/SA/P&P/25	
REV	DATE	DESCRIPTION OF REVISIONS	BY																						
Scale: H 2000 V 200		Date: Nov - 2022		REV.: 0		SHEET: 0																			



LEGEND: PLAN PROPOSED ROAD CENTER LINE PROPOSED MEDIAN PROPOSED ROAD EDGE PROPOSED SHOULDER PROPOSED EARTHAN SHOULDER PROPOSED SERVICE ROAD PROPOSED DRAIN PROPOSED ROW EARTH WORK PROFILE FRL LME FRL RME OGL LME OGL RME OGL 20m OFFSET (LEFT) OGL 20m OFFSET (RIGHT)		CLIENT: National Highways Infrastructure Development Corporation limited	CONSULTANT: Feedback Infra Private Limited 10th Floor, Building 10C DLF Cyber City, Phase-II, Gurgaon 122 002	Drawn by: K.A Designed by: S.B Checked by: S.S Approved By: C.P Scale: A2 2000, A3 3000, V 200 Date: Nov - 2022	STATUS: DETAILED PROJECT REPORT PROJECT: Feasibility study, preparation of Detailed project report and providing pre construction services in respect of up-gradation to two lane with paved shoulder NH configuration of corridors under BHARATMALA project, NH connectivity to BRT places of the country and ADB funded projects in the state of Assam & Tripura. TITLE: PLAN AND PROFILE From Ch: 25+000 To Ch: 25+740 DRG NO: FIPL/HW/BHARATMALA/AT/SA/P&P/26 REV. 0 SHEET:
---	--	---	---	--	---



DESIGN CHAINAGE(KM)	FRL AT LME AND RME(m)	GROUND LEVEL BELOW LME(m)	GROUND LEVEL BELOW RME(m)	OGL AT 20 LHS FROM DCL(m)	OGL AT 20 RHS FROM DCL(m)
27+000	23.371	12.094	12.112	11.887	12.138
27+010	23.205	12.267	12.285	12.095	12.297
27+020	23.032	12.440	12.457	12.302	12.467
27+030	22.862	12.612	12.629	12.509	12.677
27+040	22.665	12.785	12.787	12.717	12.787
27+050	22.470	12.944	12.942	12.922	12.942
27+060	22.268	13.007	13.009	12.997	13.009
27+070	22.058	13.073	13.075	13.071	13.075
27+080	21.841	13.139	13.141	13.133	13.141
27+090	21.617	13.155	13.155	13.150	13.165
27+100	21.386	13.116	13.144	13.167	13.144
27+110	21.147	13.079	13.106	13.184	13.106
27+120	20.900	13.079	13.107	13.201	13.107
27+130	20.650	13.138	13.166	13.220	13.166
27+140	20.400	13.198	13.225	13.238	13.225
27+150	20.151	13.259	13.274	13.257	13.274
27+160	19.911	13.291	13.292	13.276	13.292
27+170	19.665	13.314	13.315	13.299	13.315
27+180	19.473	13.337	13.339	13.323	13.339
27+190	19.276	13.361	13.362	13.347	13.362
27+200	19.093	13.385	13.386	13.371	13.386
27+210	18.925	13.408	13.409	13.395	13.409
27+220	18.771	13.413	13.412	13.396	13.413
27+230	18.631	13.411	13.413	13.395	13.413
27+240	18.505	13.412	13.412	13.394	13.412
27+250	18.393	13.410	13.411	13.393	13.411
27+260	18.296	13.409	13.410	13.392	13.410
27+270	18.213	13.408	13.407	13.391	13.407
27+280	18.145	13.404	13.405	13.390	13.405
27+290	18.091	13.402	13.402	13.623	13.402
27+300	18.050	13.398	13.400	13.510	13.398

REV	DATE	DESCRIPTION OF REVISIONS	BY

03/01/2023 - 3:44pm
 PATH: D:\OneDrive - FIPL\AutoCAD\NHIDCL\Assam Section\PKG-2 (Panchgram Bypass)\P&P\Np PKG-2(15+500 to 27+300).dwg

CLIENT:

National Highways Infrastructure Development Corporation Limited

CONSULTANT:

FEEDBACK INFRA
 Making Infrastructure + appen

Feedback Infra Private Limited
 10th Floor, Building 10C
 DLF Cyber City, Phase-II,
 Gurgaon 122 002

Drawn by:	K.A	<i>Kamal</i>	STATUS:	DETAILED PROJECT REPORT
Designed by:	S.B	<i>Sujat</i>	PROJECT:	Feasibility study, preparation of Detailed project report and providing pre construction services in respect of up-gradation to two lane with paved shoulder NH configuration of corridors under BHARATMALA project, NH connectivity to BRT places of the country and ADB funded projects in the state of Assam & Tripura.
Checked by:	S.S	<i>S.S</i>	TITLE:	PLAN AND PROFILE From Ch: 27+000 To Ch: 27+300
Approved By:	C.P	<i>C.P</i>	DRG NO.:	FIPL/HW/BHARATMALA/AT/SA/P&P/28
Scale:	A2 H 2000 V 200	A3 3000 300	Date:	Nov - 2022
			REV.	0
			SHEET:	